



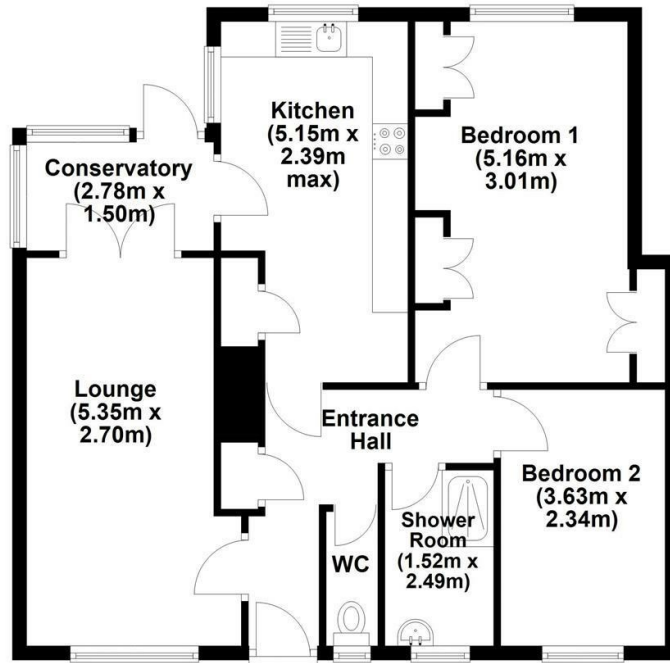
37 HARVEY KENT GARDENS
LINCOLN, LN3 5XH

£165,000
FREEHOLD

BELL

Ground Floor

Approx. 72.7 sq. metres (782.4 sq. feet)



Total area: approx. 72.7 sq. metres (782.4 sq. feet)

While every attempt has been made to be as factual as possible, the dimensions noted, actual sizes, location of doors and windows are all approximate and are to be used as a general guide only. This plan is not to be relied upon for scale or accuracy. Plan produced using PlanUp.



Energy Efficiency Rating		Current	Potential
Very energy efficient - lower running costs			
(92 plus) A			
(81-91) B			
(69-80) C			
(55-68) D			
(39-54) E			
(21-38) F			
(1-20) G			
Not energy efficient - higher running costs			
England & Wales		EU Directive 2002/91/EC	

EPC Rating: **Council Tax Band: A**

Agents Note: Whilst every care has been taken to prepare these particulars, they are for guidance purposes only. All measurements are approximate and are for general guidance purposes only and whilst every care has been taken to ensure their accuracy, they should not be relied upon and potential buyers/tenants are advised to recheck the measurements

Lincoln Sales
43 Silver Street
Lincoln
Lincolnshire
LN2 1EH

